

# INTEX<sup>®</sup> OWNER'S MANUAL AQUAQUEST<sup>™</sup>

**IMPORTANT**  
**THIS MANUAL CONTAINS IMPORTANT SAFETY**  
**INFORMATION. READ IT THOROUGHLY BEFORE USING**  
**THIS PRODUCT AND KEEP IT FOR FUTURE REFERENCE.**

Due to a policy of continuous product improvement, Intex reserves the right to change specifications and appearance, which may result in updates to the instruction manual, without notice.

**INTEX<sup>®</sup>**

©2023 Intex Marketing Ltd. - Intex Development Co. Ltd. - Intex Recreation Corp. All rights reserved/Tous droits réservés/Todos los derechos reservados/Alle Rechte vorbehalten. Printed in China/Imprimé en Chine/Impreso en China/Gedruckt in China.  
®<sup>™</sup> Trademarks used in some countries of the world under license from®<sup>™</sup> Marques utilisées dans certains pays sous licence de/Marcas registradas utilizadas en algunos países del mundo bajo licencia de/Warenzeichen verwendet in einigen Ländern der Welt in Lizenz von/Intex Marketing Ltd. to/à/a/an Intex Development Co. Ltd., Hong Kong & Intex Recreation Corp., P.O. Box 1440, Long Beach, CA 90801  
• Distributed in the European Union by/Distribué dans l'Union Européenne par/Distribuido en la Unión Europea por/Vertrieb in der Europäischen Union durch/Intex Trading B.V., Ettenseweg 46, 4706 PB Roosendaal – The Netherlands • Distributed in the UK by Unitex Service (UK) Limited, 21 Holborn Viaduct, London EC1A 2DY, UK.  
[www.intexcorp.com](http://www.intexcorp.com)

043-<sup>\*</sup>IO-R1-2410

**TABLE OF CONTENTS**

WARNINGS.....3-4

TECHNICAL SPECIFICATIONS.....5

DESCRIPTION.....5

INFLATION.....6

ANKLE LEASH INSTALLATION.....6

FIN INSTALLATION.....6

ADJUSTABLE PADDLE ASSEMBLY.....7

GENERAL USE OF THE SUP.....7

DEFLATION.....8

CARE, MAINTENANCE AND STORAGE.....8

REPAIRS.....8

TROUBLESHOOTING GUIDE.....9

LIMITED WARRANTY.....10

**SAVE THESE INSTRUCTIONS**



## WARNING

**Stand-up paddle (SUP) boarding is a demanding sport that will expose the users to unexpected danger, risks, hazards and physical injury. It is important that users fully understand and follow all the warnings and instructions in this manual to minimize the risk of serious injury or death.**

- Do not allow anyone to operate or assemble the product until they have read this manual and have a full understanding of how the product works as well as when and where to use it. Take lessons from a certified instructor before using this product.
- You are responsible for your own safety and the safety of others when you are using this product. Anyone using this product must be able to swim and must be in good health and physical condition.
- Never paddle alone. Always paddle with an experienced partner when using this product.
- Children shall have a parent or guardian read and explain the entire Owner's Manual to them. Children shall not use the SUP unless they are under the guidance and competent supervision of an adult.
- Beware of offshore winds and currents. Do not use in high winds, bad weather, heavy surf conditions, or when thunderstorms are in the forecast.
- Check weather forecast as weather conditions can rapidly deteriorate, always be sure that you can reach a shelter rapidly.
- Do not carry the SUP in windy conditions, it may be blown away causing serious injury to the user or others in their vicinity.
- This is not a lifesaving device. Everyone must wear a Coast Guard approved personal flotation device (PFD) and safety headgear (where appropriate). Local, state or federal authorities may fine you for failure to have a US Coast Guard approved life preserver onboard your SUP for each person.
- Never allow diving or jumping onto or from this product.
- Never use this product while under the influence of alcohol, drugs or medications or when you are tired.
- Swift currents, waves, tides and wakes of boats may all cause problems, especially for an inexperienced user. Users should always become experienced in calm waters before attempting any of these more challenging situations.
- Beware of things in the water like rocks, branches, docks, other boats and paddle boards and even swimmers. Colliding with any of these things may cause you to lose control of the board, fall and become injured.

## SAVE THESE INSTRUCTIONS



## WARNING

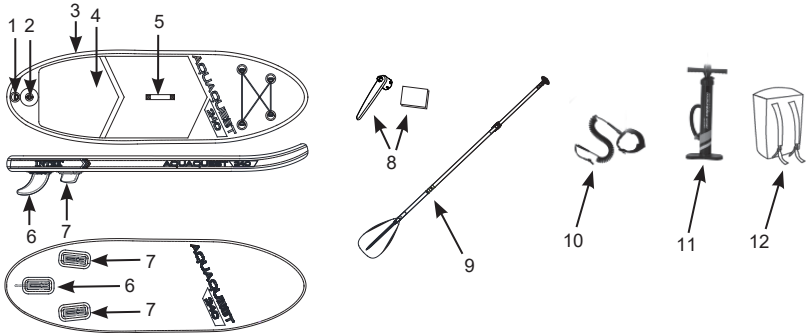
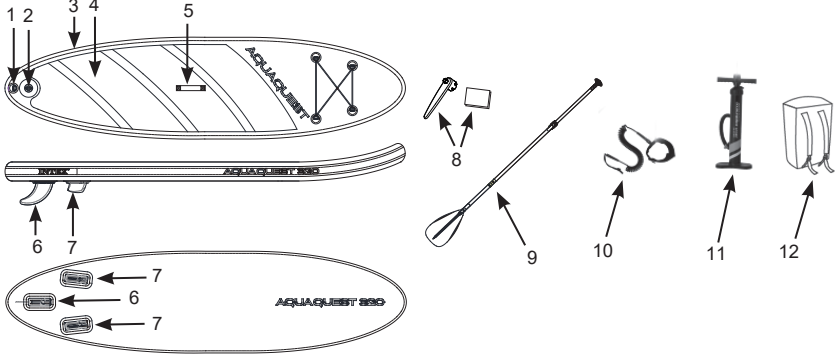
- Never leave your board, even if you lose your paddle. You can still paddle your board with your hands, which is easier than trying to swim back to shore.
- Striking a swimmer with the board or paddle can cause serious injury or death to them.
- Never exceed the maximum recommended weight capacity. Total weight of persons and equipment must be evenly distributed.
- A board leash must be used at all times. This prevents you from becoming separated from the board when you fall.
- Always inspect the SUP and the leash for signs of wear and tear before and after use. If they show signs of wear and tear, repair or replace them immediately.
- Never use this product at night or in the dark.
- This product is designed for use as a personal watercraft. It is not to be used on land or to be towed by any watercraft or other means. Do not add a sail or motor or any other means of propelling the SUP.
- This product should not be modified or used for any application other than that for which it was designed.
- Never operate your SUP unless it is properly inflated. Operating an inflatable SUP that is either over inflated or under inflated increases the risk of injury.
- Do not use this product in shallow water, as the fins may strike submerged objects causing damage to the fins and/or fin slots.
- Advise someone on land about your paddle routes and the time you plan to be back at your starting point.
- Before using the SUP familiarize yourself with local laws, rules, and regulations (such as leash, PFD's, radios, whistle, waterproof flashlights and tow-ropes).
- Do not secure any object to your SUP that could cause further injury in the event of a fall.
- Avoid all contact between the SUP and sharp objects or harmful liquids (such as oil, acid).
- Do not exceed the recommended working pressure. Do not over inflate or use an air compressor.
- Do not transport the product fully pressurized. Travelling from low to high altitudes will increase the air pressure inside the chamber and possible damage the product due to over-pressurization.

**FOLLOW THESE RULES TO AVOID DROWNING, SERIOUS INJURIES OR DEATH.**

**SAVE THESE INSTRUCTIONS**

**Technical Specifications**

MODEL	L <sup>h</sup>	W <sup>h</sup>	H <sup>h</sup>	🧳 + 🧑 + 🧑		🧑	➡ ● ⬅
	m/in	m/in	m/in	lbs	kg		bar (psi)
AQUAQUEST 240	2.44/96	0.76/30	0.13/5	200	90	1	1.24 (18)
AQUAQUEST 320	3.20/126	0.81/32	0.15/6	330	150	1	1.24 (18)

**Description****AQUAQUEST 240****AQUAQUEST 320**

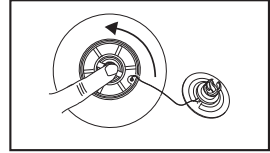
Descriptions			
1	Leash D ring	7	Small fin
2	Valve	8	Wrench and repair patches
3	SUP body	9	Adjustable paddle
4	Anti-skid mat	10	Ankle leash
5	Handle	11	Hand pump
6	Large fin	12	Backpack

**NOTE:** Drawings for illustration purpose only. Actual product may vary. Not to scale.

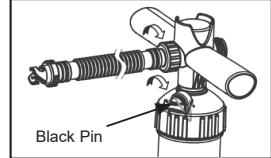
# SAVE THESE INSTRUCTIONS

**Inflation:**

1. Locate a flat surface free of sharp objects.
2. Remove the product from the backpack and unfold it with the valve facing up.
3. Open the valve cap. Make sure the valve stem is in the up (close) position. If the valve stem is down and air is escaping, gently push the stem in and turn it counterclockwise to close the valve (up position). You should feel the stem spring up and stay in the up (closed) position.

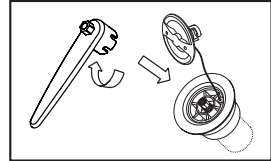


4. Screw the inflation hose to the pump inflation port. Make sure the black pin is inserted into the hand pump. With pin inserted, the pump is now in "double action" mode meaning that airflow occurs on both the up and down compressions.



At around **12 psi (0.8 bar)** or when it becomes difficult to inflate on both strokes, remove the black pin, the pump is now in "single action" mode meaning you will only be inflating on the down compression. This allows for easier inflation at higher pressure.

5. Insert inflation hose into the valve and turn clockwise to lock it in place.
6. Start inflating the product to **15-18 psi (1.03-1.24 bar)**.



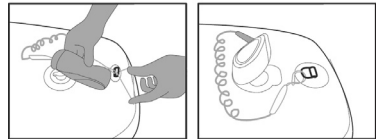
**WARNING:** Do not exceed the recommended working pressure. Do not use an air compressor. Over inflation will damage the product and void the warranty.

7. Remove the hose from the valve and replace the valve cap.
8. If the valve body or base leaks, use the included wrench to tighten the valve clockwise and stop the leak.

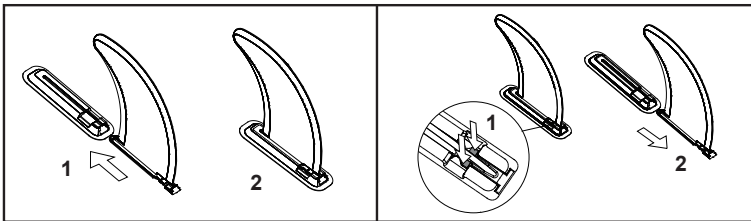
**NOTE:** To avoid damage to the pressure gauge, do not remove the protective foam that surrounds the pressure gauge on the pump handle.

**Ankle Leash Installation:**

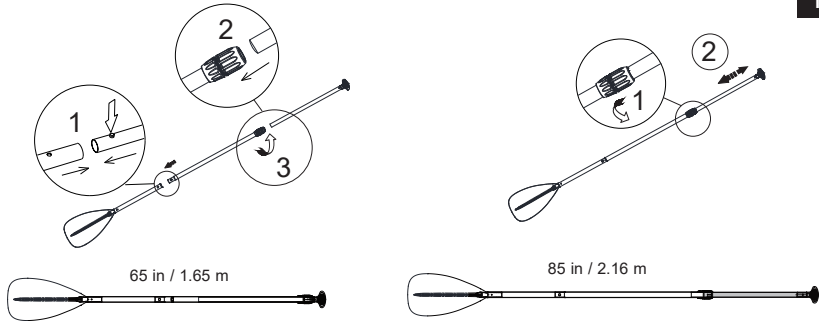
Attach the leash to the D ring located at the tail end of the SUP.

**Fin Installation:**

1. Slide the large fin into the **center** slot.
2. Slide the smaller fins into the left and right slots.
3. Make sure all the fins are securely locked into the slots.



**SAVE THESE INSTRUCTIONS**

**Adjustable Paddle Assembly:**43  
IO**WARNING**

Extended exposure to the sun can shorten the lifespan of the product. Do not leave the product in direct sunlight for more than 1 hour after use.

**General Use of the SUP:**

1. Adjust the length of the paddle before using the SUP: add a hand's breadth (about 6 in / 15 cm) above your head (Fig 1).
2. Kneel on the SUP (Fig 2).
3. Gradually stand up on one leg (Fig 3).
4. Stand up with the other leg and keep your hands on the board (Fig 4).
5. Maintain balance with paddle (Fig 5).
6. Stand at the center of the SUP facing forward with your feet approximately shoulder width apart and knees slightly bent (Fig 6).
7. Place one hand on top of the paddle handle. Place the other hand on the shaft of the paddle about 24 in/61cm below the handle.
8. Begin to row after standing up (Fig 7).
9. To go straight, paddle alternating from left to right side of the SUP using the same number of strokes on each side.
10. To turn left, paddle on the right side of the SUP. To turn right, paddle on the left side.  
Note: Take lessons from a certified instructor before using this product.



Fig. 1



Fig. 2



Fig. 3

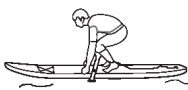


Fig. 4



Fig. 5

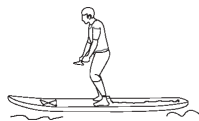


Fig. 6

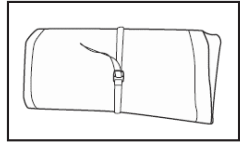
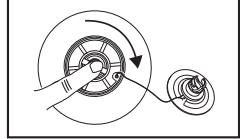


Fig. 7

**SAVE THESE INSTRUCTIONS**

**Deflation:**

1. Remove the fins and the ankle leash, and disassemble the paddle.
2. With the SUP inflated and the valve closed, clean the SUP and accessories with fresh water. Make sure the SUP and accessories are completely dry before storing.
3. Open the valve cap, push the valve stem in and turn it clockwise to secure it in the down (open) position.  
**CAUTION:** Air pressure in the SUP is high. Do not face directly over the valve to avoid the initial blast of air.
4. Fold the SUP, starting from the nose with the anti-skid mat on the inside and the fin slots will then be on the outside. This prevents damage to the anti-skid mat. Push out all the air while folding the SUP.
5. Once the deflation is completed, push the stem in and it counterclockwise until it spring up and stays in the up (closed) position.
6. Wrap the belt around the rolled up SUP, fasten the buckle, and place the SUP and accessories in the backpack.

**Care, Maintenance and Storage:**

There is very little that you have to do to keep your SUP in good condition for many years. If you store it in a closet, basement or garage, we suggest you pick a cool, dry place, making sure the SUP is clean and dry before you store it – or mold can accumulate.

Do not leave or store the SUP in direct sunlight or excessive heat conditions such as inside a closed vehicle. Excessive heat will increase the pressure inside the SUP beyond the recommended working pressure and can damage the SUP. If you must store temporarily in the sun, protect the SUP by covering with a towel or storing in a shaded area. Release a small amount of pressure from the SUP to allow for pressure build up from heat. Pump the SUP back up to the recommended working pressure before using again.

Clean your SUP after a trip to prevent damage from sand, salt water or sun exposure. Most dirt can be removed with a garden hose, a sponge and mild soap. Make sure the SUP is completely dry before storing. Store the product and accessories in a dry, temperature controlled, between 32° F (0° C) and 104° F (40° C) storage location.

**Repairs:**

1. First locate the leak; soapy water will bubble out from the source of the leak. Deflate and thoroughly clean the area surrounding the leak to remove any dirt or grime.
2. Cut a piece of repair patch large enough to overlap the damaged area by approximately 1.5 cm (1/2") and round off the edges.
3. Apply some glue (not included) to the patch and the damaged area. You can purchase a PVC or silicon based glue for repairing camping tents or shoes from your local market, please refer to the instruction of the glue for patching.
4. Place the patch on the damaged area and **PRESS DOWN FIRMLY**. You may want to use a weight on top to keep it in place.
5. Wait 24 hours before use.

**SAVE THESE INSTRUCTIONS**



## Troubleshooting Guide

PROBLEM	CAUSE	SOLUTION
Hand pump is not working	<ul style="list-style-type: none"> <li>• Inflation hose is blocked, twisted or damaged in any way.</li> <li>• Connection between the inflation hose - hand pump and/or inflation hose - inflation valve on the product is not secure.</li> <li>• Pump pressure gauge is not working.</li> </ul>	<ul style="list-style-type: none"> <li>• Remove any blockages from the hose, straighten the hose or replace it if damaged.</li> <li>• Check that all the connections are secure and reinstall if necessary.</li> </ul>
SUP is punctured or leaking	<ul style="list-style-type: none"> <li>• With the SUP inflated, spray soapy water around the inflation valve.</li> <li>• With the SUP inflated, spray soapy water over the deck and sides.</li> </ul>	<ul style="list-style-type: none"> <li>• If bubbling occurs, tighten valve using the wrench provided. Deflate the SUP, reach for the nut from underneath the SUP, insert the wrench on the valve and turn clockwise until fully tightened and secure.</li> <li>• If bubbling occurs on the seams and deck, you can easily repair a puncture with the patches provided and a strong adhesive glue (not included). See "Repairs" section for details.</li> <li>• Contact Intex service center.</li> </ul>
Fin falls off easily	<ul style="list-style-type: none"> <li>• Check that the fin is correctly and securely installed.</li> </ul>	<ul style="list-style-type: none"> <li>• Slide the fin into the fin slot all the way in and make sure the lever on the fin is securely snapped into place.</li> </ul>
Water or moisture inside the SUP	<ul style="list-style-type: none"> <li>• Immediate action is required.</li> </ul>	<ul style="list-style-type: none"> <li>• Remove the inflation valve from the SUP entirely using the inflation valve wrench provided. Pump air through the vacant hole repeatedly for 20 minutes. Lay the SUP flat in a cool, dry area with plenty of ventilation for at least 24 hours. Reinstall the inflation valve back to the SUP.</li> </ul>

# SAVE THESE INSTRUCTIONS

## Limited Warranty

Your Intex SUP has been manufactured using the highest quality materials and workmanship. All Intex SUP have been inspected and found free of defects prior to leaving the factory. This limited warranty applies to the Intex SUP only.

This limited warranty is in addition to, and not a substitute for, your legal rights and remedies. To the extent that this warranty is inconsistent with any of your legal rights, they take priority. For example, consumer laws across the European Union provide statutory warranty rights in addition to the coverage you receive from this limited warranty: for information on EU-wide consumer laws, please visit the European Consumer Center website at [http://ec.europa.eu/consumers/ecc/contact\\_en/htm](http://ec.europa.eu/consumers/ecc/contact_en/htm).

The provisions of this limited warranty apply only to the original purchaser. This Limited Warranty is valid for a period of 1 year from the date of purchase. Keep your purchase information with this document, as proof of purchase will be required and must accompany warranty claims or the limited warranty will be invalid.

If you find a manufacturing defect in the Intex SUP during the warranty period, please contact the appropriate Intex Service Center listed in the separate "Authorized Service Centers" sheet. If the item is returned as directed by the Intex Service Center, the Service Center will inspect the item and determine the validity of the claim. If the item is covered by the provisions of the warranty, the item will be repaired or replaced, with the same or comparable item (at Intex's choice) at no charge to you.

Other than this warranty, and other legal rights in your country, no further warranties are implied. To the extent possibly in your country, in no event shall Intex be liable to you or any third party for direct or consequential damages arising out of the use of your Intex SUP, or Intex or its agents' and employees' actions (including the manufacture of the product). If your country does not allow the exclusion or limitation of incidental or consequential damages, this limitation or exclusion does not apply to you.

You should note that this limited warranty does not apply in the following circumstances:

- If the Intex SUP is subject to negligence, abnormal use or application, accident, improper operation, trawling or towing, improper maintenance or storage;
- If the Intex SUP is subject to damage by circumstances beyond Intex's control, including but not limited to, punctures, tears, abrasions, or ordinary wear and tear;
- To parts and components not sold by Intex; and/or
- To unauthorized alterations, repairs or disassembly to the SUP by anyone other than Intex Service Center personnel.

Read the owner's manual carefully and follow all instructions regarding proper operation and maintenance of your Intex SUP. Always inspect your equipment prior to use. This limited warranty will be void if use instructions are not followed.

# SAVE THESE INSTRUCTIONS